The background of the slide features a light blue map of North Carolina. Overlaid on the map is a word cloud containing various terms such as 'innovation', 'technology', 'business', 'development', 'partnerships', 'talent', 'research', 'creativity', 'collaboration', 'opportunity', 'community', 'entrepreneurship', 'success', and 'North Carolina'. The words are in different colors and sizes, creating a textured effect. In the top right corner, there is a logo for 'THE RESEARCH TRIANGLE PARK' which includes a stylized blue and red triangle.

THE RESEARCH TRIANGLE of NC

Fifty Years of Achievement

William F. Little

March 6, 2008

The future of great ideas™
technology
innovation
success

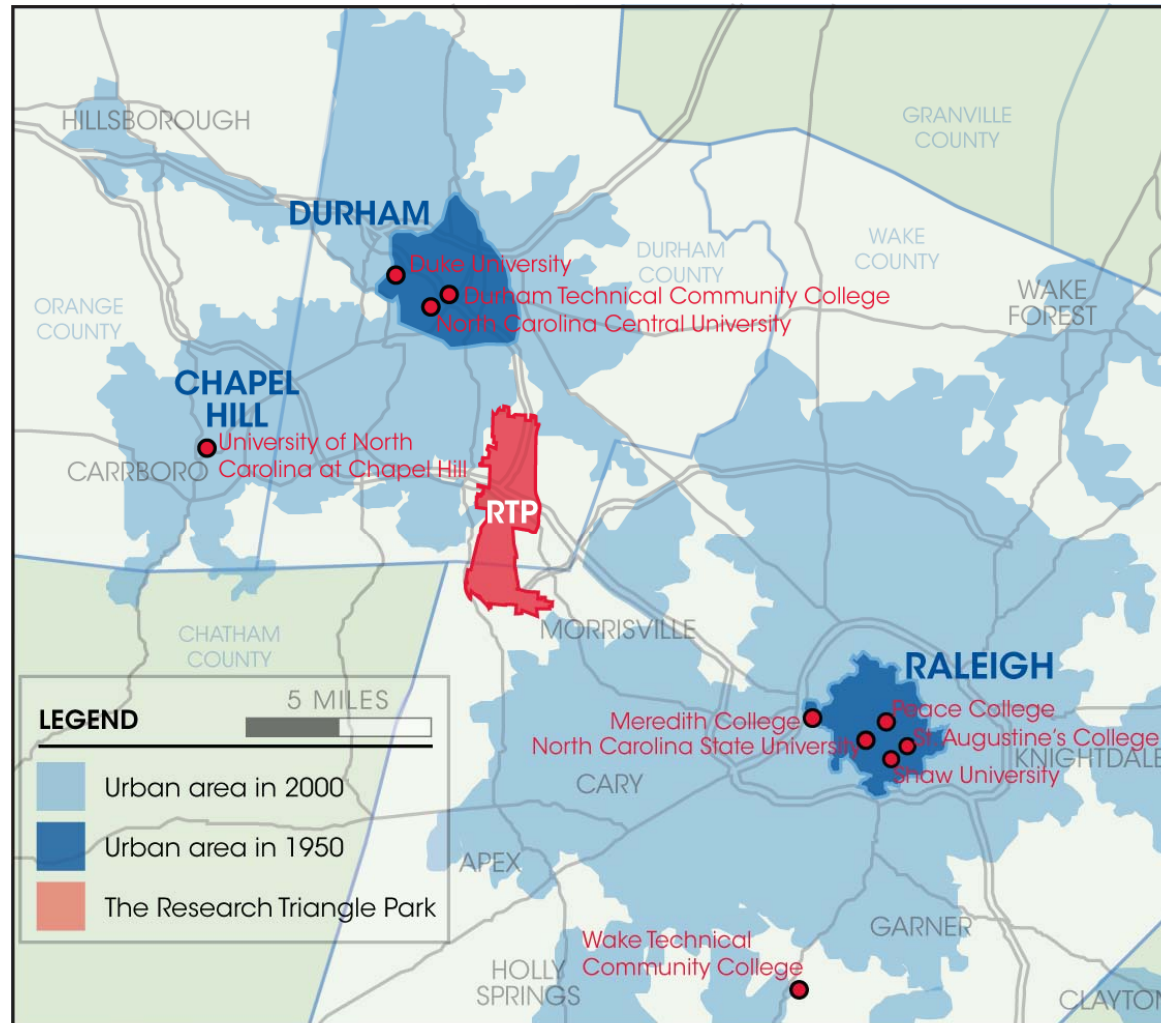


RTP in the Southeastern U.S.



Centrally located on the eastern seaboard

The “Research Triangle” Area



Sources: U.S. Census, Triangle J Council of Governments

Economic Background

North Carolina problems in 1950s:

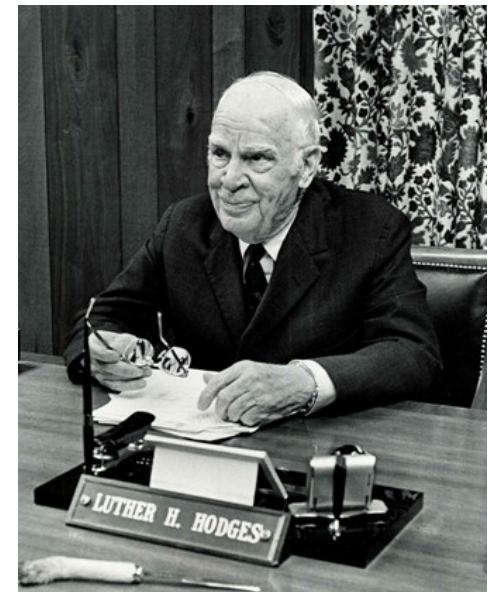
- Low-wage industries:
 - Textiles, Tobacco, and Furniture
- Marginal farming
- Brain drain of college graduates
 - Result: 2nd lowest per capita income in the U.S.





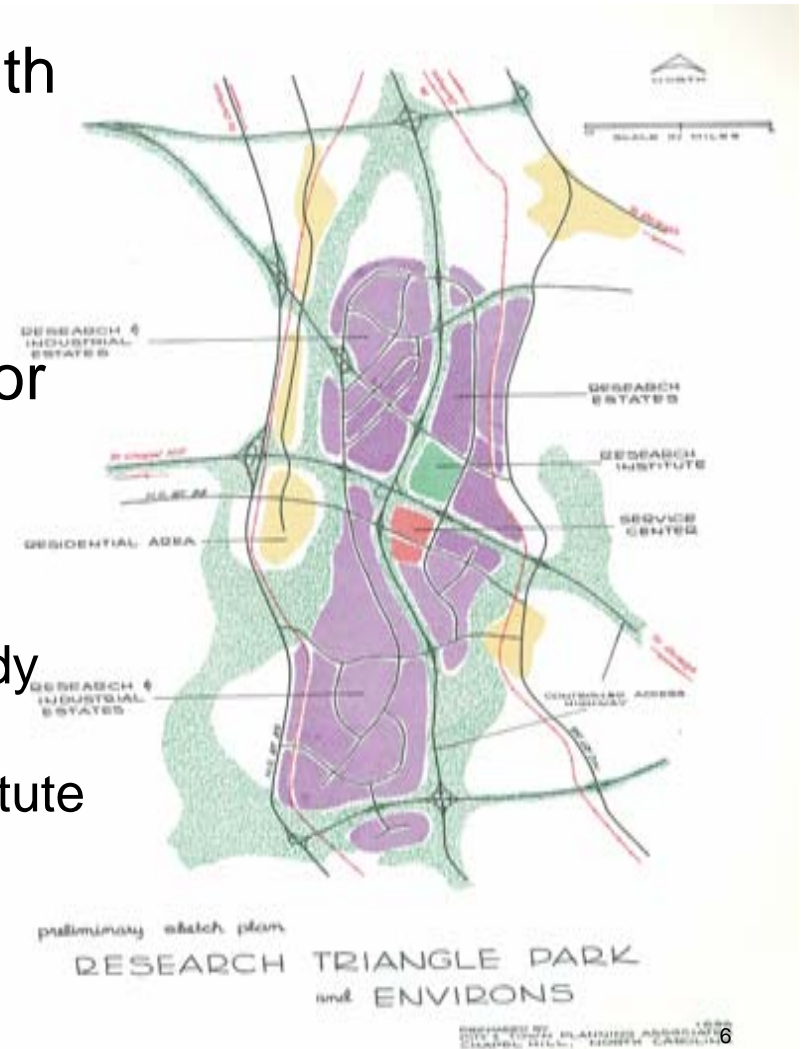
The Research Triangle Committee

- Appointed by Governor Luther Hodges, business and university leaders (1955)
- Charge:
 - How to create a new future based on the research universities -- like the Bay Area of CA and Rte 128 around Boston
- Proposed:
 - Attract industrial research laboratories
 - Might change Industrial base of NC
 - New opportunities for young people



The Research Triangle Committee, Inc.

- Became a non-profit corporation with private funding for the next steps (1956)
- UNC sociology professor as Director
- The Business Plan:
 - Promote area with a team of faculty “traveling salesmen” - a feasibility study
 - Longer term goal: a research park
 - A not-for-profit contract research institute as its centerpiece





The Research Park

Entrepreneur acquired land for a private, for-profit, research park (1957)

Archie Davis (Wachovia) raised \$1.8 m. to:

- Acquire the land; convert to a non-profit park (1959)
- Hire a professional staff for RTP
- Plan and develop infrastructure
- Provide 128 acres for Research Triangle Institute
- Provide start-up funds for the Institute
- Construct first building for RTF* and RTI

*Research Triangle Committee Inc.
became Research Triangle Foundation,
Inc. of NC



Early Successes

First Major Tenant (1959):

➤ Chemstrand Corporation



Second Major Tenant (1965):

➤ IBM





The Research Triangle Park Today



Quick Facts:

- 7,000 acres
- 160+ tenants
- 24.5 million ft² of construction
- 40,000 employees
- \$2.7 billion annual payroll
- Average size: 250 employees
- Median size: 10 employees

Industry Sectors:

- Life Sciences
- Materials Science & Engineering
- Information Science & Technology
- Environmental Sciences
- Scientific Associations, Foundations, Institutes
- Business and Professional Services
- Financial & Insurance Activities
- Retail Amenities & Service Providers

All Accomplished Without State Appropriations



Special Features in RTP

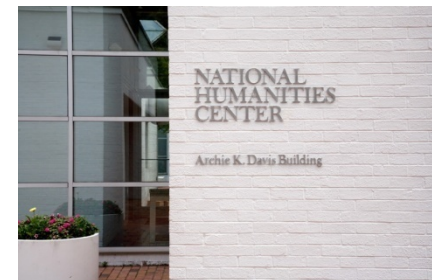
Triangle Service Center (subsidiary of RTF)

- Commercial District -- banks, deli, travel. etc.
- Hotel and Conference Center
- 12 office buildings for leased space
- Park Research Center (incubator)



“TUCASI”

- National Humanities Center
- NC Biotechnology Center
- Microelectronics Center of NC
 - Chip Design and Fabrication
 - State-wide Telecommunications Network
 - Supercomputing Center for Universities
- National Institute for Statistical Sciences
- Statistical and Mathematical Sciences Institute
- Burroughs Wellcome Fund



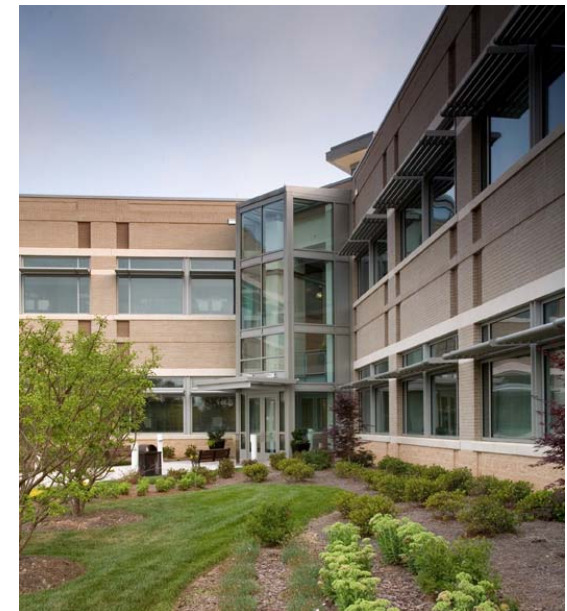


Research Triangle Institute Today

2,600 Employees: 5th largest in RTP
2nd largest nonprofit CRI in U.S.
Projects in more than 40 countries
>\$600 million in annual revenue

Research concentrations in:

- Statistics and Survey Research
- Electronics and Engineering
- Chemistry and Life Sciences
- Environmental Science
- International Assistance





Unanticipated Developments in the Region

Start-ups & spin-offs (technology-based):

>1,800 since 1970

- 280 started in RTP; *ca.* 100 currently in RTP
- >80,000 jobs created
- Areas such as drug discovery and delivery, biotechnology, medical devices, software and hardware, environment, pharmaceutical CROs

Satellite parks:

>50 between RTP and the three cities

- More construction and acreage than in RTP
- More jobs than in RTP

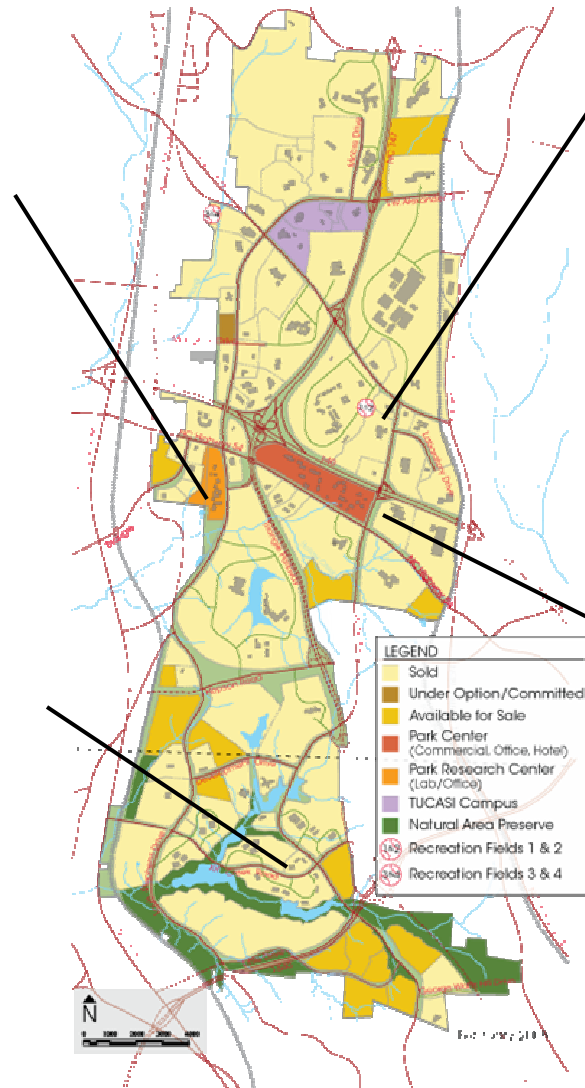
Incubators in The Research Triangle Park

Park Research Center

- 13-building campus
- 75,000 ft² of office/lab space
- 12 companies

Alexandria Innovation Center

- Owned and managed by Pappas Ventures
- 150,000 ft² campus



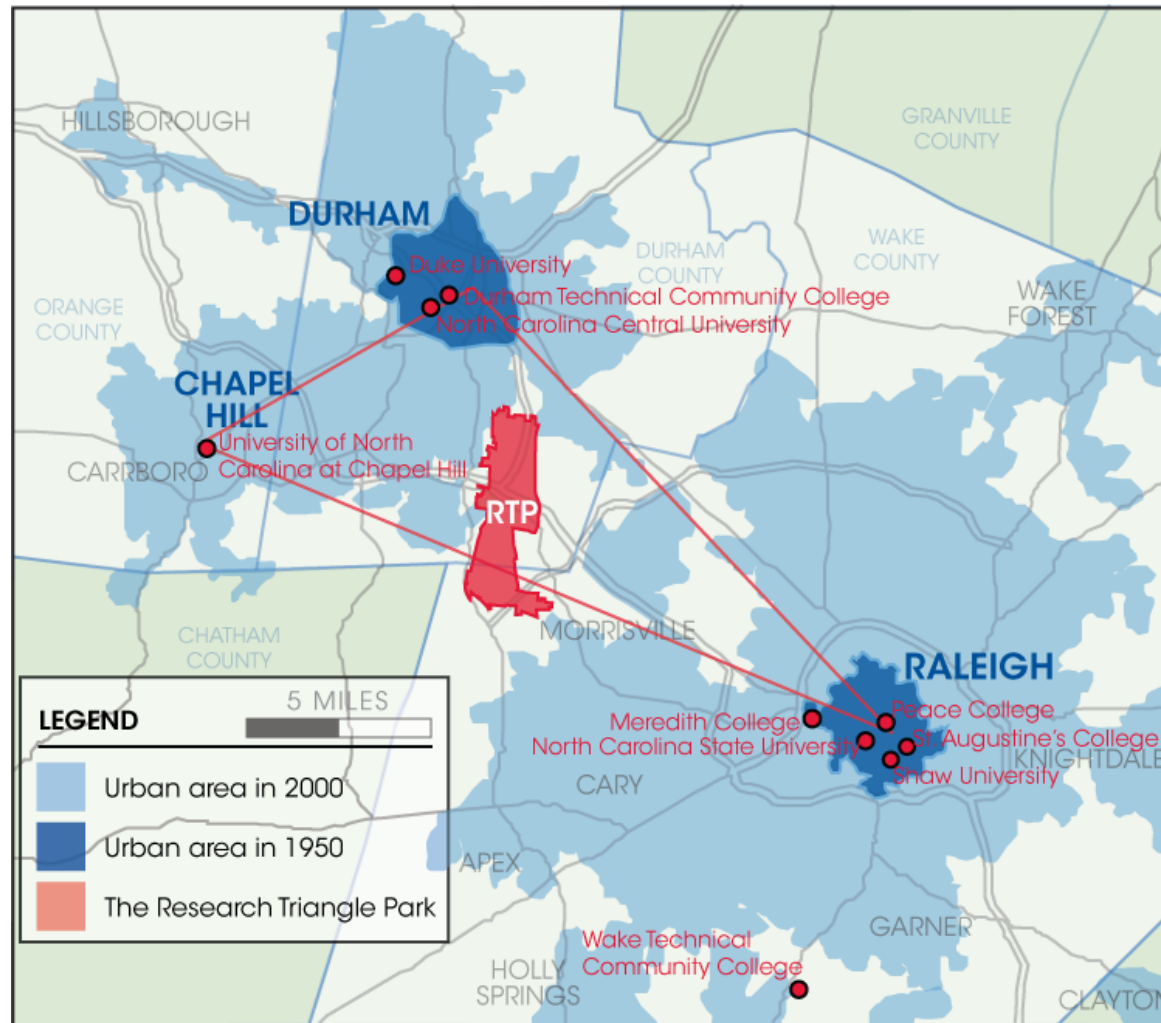
First Flight Venture Center

- Established in 1991
- 16,000 ft² of office/lab space
- 31 start-ups;
>150 graduates
- “Best Science-Based Incubator 2006” (Science Alliance)

BD BioVenture Center

- Supported by BD Technologies’ \$40 million venture capital fund
- 14 participant companies, raising a total of \$400 million in funding

The “Research Triangle” Area



Sources: U.S. Census, Triangle J Council of Governments



Some of the People Who Made It Work

From State Government:

- Luther Hodges, Governor
- Brandon Hodges, former State Treasurer
- Terry Sanford, Governor
- Jim Hunt, Governor



Luther
Hodges



Terry
Sanford



Jim
Hunt



Some of the People Who Made It Work

From the Universities:

Gordon Gray, President, UNC
Hollis Edens, President, Duke
John Caldwell, Chancellor, NCSU
Harold Lampe, Dean of Engineering, NCSU
W.C. Davison, Dean of Medicine, Duke
George Simpson, Professor, UNC
Bill Stevenson, Professor, NCSU
Charles Putman, Vice President, Duke
Paul Gross, VP and Professor, Duke
Dan Okun, Professor, UNC
Charles Weiss, Professor, UNC
Fred Brooks, Professor, UNC
Walter Harper, Director of Foundations, NCSU
Gertrude Cox, Professor, NCSU
Claude McKinney, Professor, NCSU
John Sanders, Professor, UNC
Walton Jones, VP UNC

William Friday, President, UNC
Felix Joyner, VP Finance, UNC
Dean Colvard, Dean of Agriculture, NCSU
Walter Seeley, Dean of Engineering, Duke
Malcomb Campbell, Dean of Textiles, NCSU
Bill Little, Professor, UNC
John F. Lee, Professor, NCSU
Talman Trask, Vice President, Duke
Marcus Hobbs, Professor and Provost, Duke
Emil Chanlett, Professor, UNC
Arthur Menius, Professor and Dean, NCSU
William Newell, Dir. of Textile Research, NCSU
Kenneth Penrod, Prof. of Medicine, Duke
Carey Bostain, Chancellor, NCSU
Slayton Evans, Professor, UNC
C. Hugh Holman, Professor, UNC



Some of the People Who Made It Work

From the Business Community:

Bob Hanes, Banker
George Watts Hill, Banker
Sherwood Smith, CEO Power Co.
John McNair, Banker
David Ward, Attorney
Romeo Guest, Construction Contractor
Bill Saunders, Textiles Manufacturer
Tom Alexander, Life Insurance Executive
George Watts Carr, Real Estate Executive
Nello Teer, Developer
Smedes York, Developer
Rob Teer, Developer

Archie Davis, Banker
Bob Armstrong, VP Research Celanese
Louis C. Stephens, Jr., Life Insurance Exec.
Fred Coe, Pharmaceuticals CEO
Earl Johnson, Jr., Construction Contractor
Karl Robbins, Textiles Manufacturer
Bill Maughan, Forester
Akers Moore, Commercial Printer
Margaret Knox, Newspaper Editor & Pub.
George Geoghagen, Banker
Enriqueta Bond, Foundation Director
“Zeke” Cozart, Tobacco warehousing



Thumbnail History

Romeo Guest, Contractor



Romeo Guest



Karl Robbins

Luther Hodges, Governor



Luther Hodges



Archie Davis

Robert M. Hanes, State-wide Banker



Robert Hanes



Pearson Stewart

George L. Simpson, Professor



George Simpson



George Watts Hill

Karl Robbins, Textiles Owner

Archie K. Davis, State-wide Banker

Pearson Stewart, Professional Planner

George Watts Hill, Local Banker



Research Triangle Foundation of North Carolina
12 Davis Drive, PO Box 12255
RTP, NC 27709
919.549.8181

www.rtp.org

NCRC Kannapolis